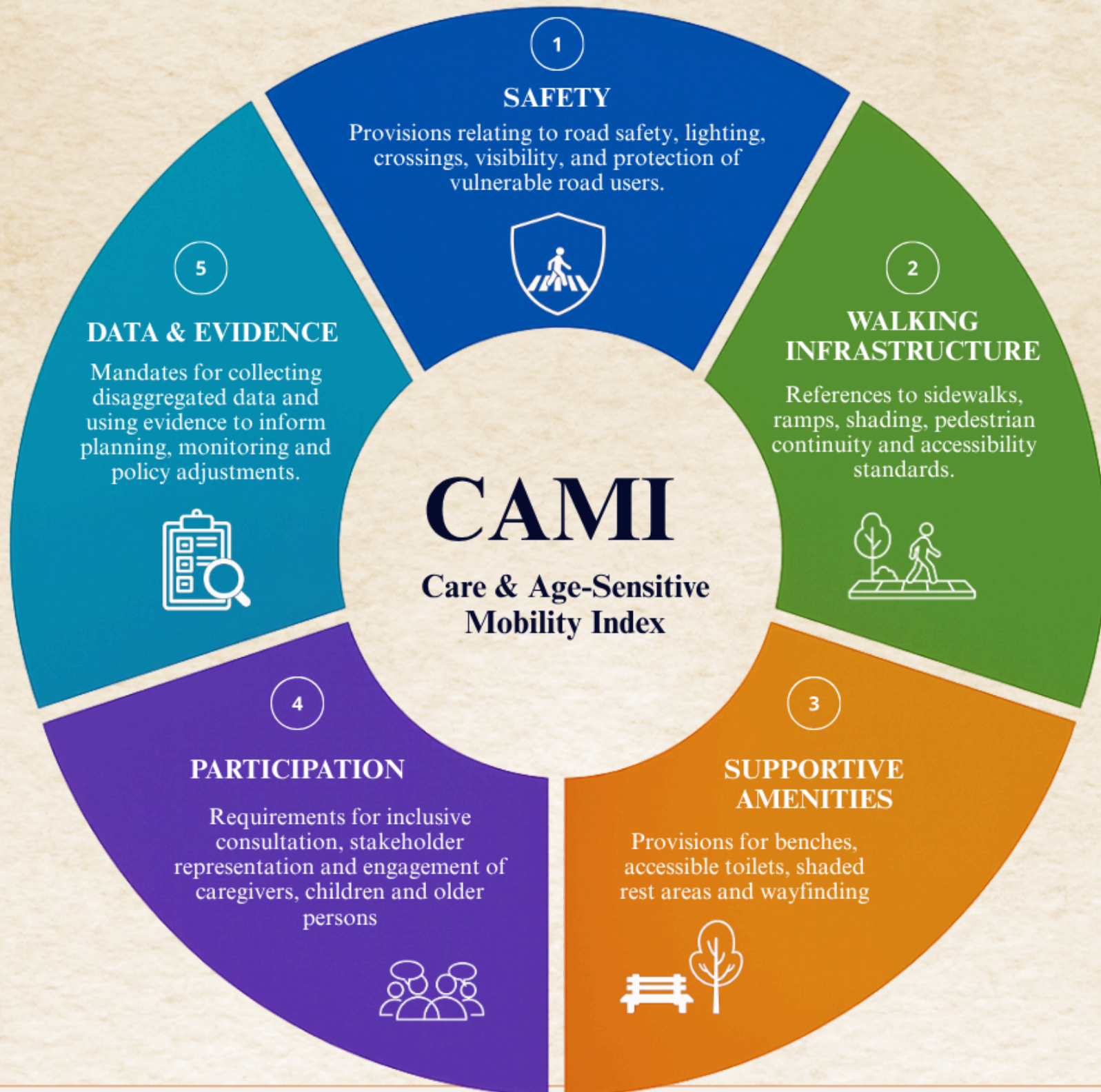


CAMI

Care & Age-Sensitive Mobility Index

Methodology Note

Women Shaping Cities | 2025



CAMI is a diagnostic tool designed by Women Shaping Cities to evaluate how legal and policy instruments integrate care- and age-sensitive mobility considerations.



What is CAMI?

The Care & Age-Sensitive Mobility Index (CAMI) is a diagnostic policy assessment tool developed by Women Shaping Cities under the Invisible in Motion initiative.

It assesses how legal and policy frameworks integrate care- and age-sensitive mobility considerations, asking not simply whether policies make commitments, but whether they create the conditions for those commitments to be realised in everyday life.

CAMI was developed in response to a persistent gap between what policies promise and what people experience on the ground. Caregivers, children, older persons, and persons with disabilities are among the most consistent and most vulnerable users of public space and walking networks. Yet their mobility needs remain largely absent from the frameworks that shape how cities are planned, how transport is financed, and how mobility is measured.

CAMI makes that gap visible, systematically, consistently, and across multiple policy domains.

The Five Dimensions

CAMI evaluates policy frameworks across five dimensions:

1. **Safety:** Provisions related to road safety, lighting, crossings, visibility, and the protection of vulnerable road users.
2. **Walking Infrastructure:** References to sidewalks, ramps, shading, pedestrian continuity, and accessibility standards, the physical conditions that make movement possible.
3. **Supportive Amenities:** Provision of benches, accessible toilets, shaded rest areas, breastfeeding-friendly spaces, and wayfinding, elements that make journeys manageable and dignified.
4. **Participation:** Requirements for inclusive consultation, representation, and engagement of caregivers, children, older persons, and persons with disabilities.
5. **Data & Evidence:** Mandates for collecting disaggregated data and using evidence to inform planning, monitoring, and decision-making.

Scoring Approach

Each framework is assessed using a 0–5 scale:

Score	Interpretation
0	No reference to care- or age-sensitive mobility elements
1	Generic or incidental mention only
2	Principles or aspirations articulated without defined actions or implementation pathways
3	Specific measures articulated, but lacking clear assignment of responsibility or resourcing
4	Measures include defined institutional responsibility and/or resource allocation mechanisms
5	Measurable targets, timelines, monitoring indicators, and enforcement mechanisms specified

The scale captures not only whether mobility is referenced, but how clearly, how operationally, and with what level of accountability.

How CAMI is Applied

CAMI is applied through a four-stage process:

1. Document Review:- Identification of mobility-related provisions
2. CAMI Scoring:- Structured scoring across the five dimensions
3. Comparative Analysis:- Cross-framework synthesis of results
4. Interpretive Synthesis:- Identification of gaps, patterns, and reform opportunities

Conceptual Foundations

CAMI is grounded in three key traditions:

- Mobility Justice:- recognising that mobility systems reflect decisions about whose movement matters
- Mobility of Care:- recognising care-related travel as a distinct and overlooked form of mobility
- Human-Centred Urbanism:- designing cities around the lived realities of people

Using CAMI

CAMI is designed for use by:

- policymakers
- researchers
- civil society organisations
- urban practitioners

To apply CAMI in your work, or to explore collaboration:

✉ info@womenshapingcities.org

Copyright & Use

© Women Shaping Cities, 2025.

The Care & Age-Sensitive Mobility Index (CAMI) is developed and owned by Women Shaping Cities.

You are free to:

- Share and redistribute this material in any medium or format
- Use it for research, teaching, and advocacy purposes

Under the following conditions:

- Attribution: You must give appropriate credit to Women Shaping Cities and cite the source
- Non-Commercial: You may not use the material for commercial purposes

For permissions beyond the scope of this licence, including adaptation or commercial use, please contact:

Email: info@womenshapingcities.org

Recommended Citation

Women Shaping Cities (2025). Care & Age-Sensitive Mobility Index (CAMI): Methodology Note.

www.womenshapingcities.org